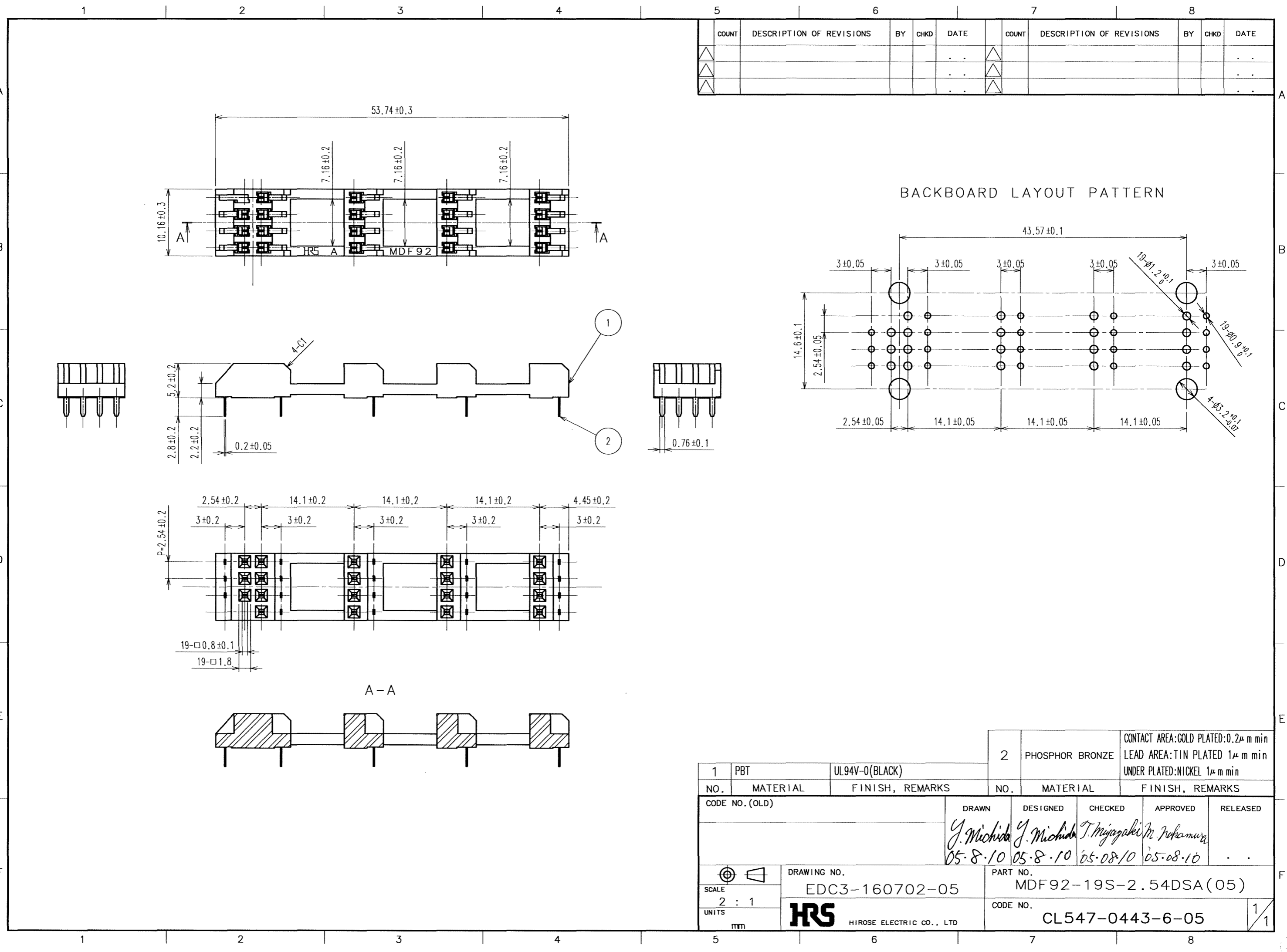


APPLICABLE STANDARD				
RATING	OPERATING TEMPERATURE RANGE	-35°C TO +85°C (NOTES 1)	STORAGE TEMPERATURE RANGE	-10°C TO + 60°C
	VOLTAGE	250V AC	APPLICABLE CONNECTOR	MDF92-19P-2. 54DSA
	CURRENT	3A		
SPECIFICATIONS				
ITEM	TEST METHOD	REQUIREMENTS	QT	AT
CONSTRUCTION				
GENERAL EXAMINATION	VISUALLY AND BY MEASURING INSTRUMENT.	ACCORDING TO DRAWING.	X	X
MARKING	CONFIRMED VISUALLY.		X	X
ELECTRIC CHARACTERISTICS				
CONTACT RESISTANCE	100m A (DC OR 1000 Hz).	30mΩ MAX.	X	-
INSULATION RESISTANCE	500V DC.	1000MΩ MIN.	X	-
VOLTAGE PROOF	650V AC FOR 1 min.	NO FLASHOVER OR BREAKDOWN.	X	-
MECHANICAL CHARACTERISTICS				
CONTACT INSERTION AND EXTRACTION FORCES	□0.635 ± 0.002mm BY STEEL GAUGE	INSERTION FORCE : 4.4 N MAX. EXTRACTION FORCE : 0.2 N MIN	X	-
INSERTION AND WITHDRAWAL FORCES	MEASURED BY APPLICACLE CONNECTOR	INSERTION FORCE : 30N MAX. WITHDRAWAL FORCE : 8 N MIN	X	-
MECHANICAL OPERATION	50TIMES INSERTIONS AND EXTRACTIONS.	① CONTACT RESISTANCE: 30mΩ MAX. ② NO DAMAGE, CRACK OR LOOSENESS OF PARTS.	X	-
VIBRATION	FREQUENCY 10 TO 55 Hz, SINGLE AMPLITUDE 0.75 mm, AT 2 h, FOR 3 DIRECTIONS.	① NO ELECTRICAL DISCONTINUITY OF 10μs. ② CONTACT RESISTANCE: -mΩ MAX ③ NO DAMAGE, CRACK AND LOOSENESS OF PARTS.	X	-
SHOCK	490 m/s ² DURATION OF PULSE 11 ms AT 3 TIMES FOR 3 DIRECTIONS.	① NO ELECTRICAL DISCONTINUITY OF 10μs. ② CONTACT RESISTANCE: -mΩ MAX ③ NO DAMAGE, CRACK AND LOOSENESS OF PARTS.	X	-
ENVIRONMENTAL CHARACTERISTICS				
RAPID CHANGE OF TEMPERATURE	TEMPERATURE -55 → 5 TO 35 → 85 → 5 TO 35°C TIME 30 → 10 TO 15 → 30 → 10 TO 15min UNDER 5 CYCLES.	① CONTACT RESISTANCE: 30mΩ MAX. ② INSULATION RESISTANCE: 1000 MΩ MIN. ③ NO DAMAGE, CRACK AND LOOSENESS OF PARTS.	X	-
DAMP HEAT (STEADY STATE)	EXPOSED AT 40 ± 2 °C, 90 TO 95 %, 96 h.	① CONTACT RESISTANCE: 30mΩ MAX. ② INSULATION RESISTANCE: 500 MΩ MIN. ③ NO DAMAGE, CRACK AND LOOSENESS OF PARTS.	X	-
CORROSION SALT MIST	EXPOSED IN 5% SALT WATER SPRAY FOR 48 h.	① CONTACT RESISTANCE: 60 mΩ MAX. ② NO HEAVY CORROSION.	X	-
SULPHUR DIOXIDE	EXPOSED IN 10 PPM FOR 96 h. (TEST STANDARD: JEIDA-39)	① CONTACT RESISTANCE: 60 mΩ MAX. ② NO HEAVY CORROSION.	X	-
RESISTANCE TO SOLDERING HEAT	SOLDER TEMPERATURE 260 ± 5°C, FOR IMMERSION DURATION 10S	NO DEFORMATION OF CASE OF EXCESSIVE LOOSENESS OF THE THE TERMINALS.	X	-
SOLERABILITY	SOLDERED AT SOLDER TEMPERATURE 245 ± 5°C FOR IMMERSION DURATION 5S.	SOLDER SHALL COVER A MINIMUM OF 95% OF THE SURFACE BEING IMMersed	X	-
COUNT	DESCRIPTION OF REVISIONS	DESIGNED	CHECKED	DATE
△				
REMARKS		APPROVED	MO. NAKAMURA	05.08.10
NOTE1: INCLUDING THE TEMPERATURE RISE BY CURRENT.		CHECKED	TS. MIYAZAKI	05.08.10
UNLESS OTHERWISE SPECIFIED, REFER TO JIS C 5402.		DESIGNED	YH. MICHIDA	05.08.09
		DRAWN	YH. MICHIDA	05.08.09
Note QT: Qualification Test AT: Assurance Test X: Applicable Test		DRAWING NO.	ELC4-160702-05	
SPECIFICATION SHEET		PART NO.	MDF92-19S-2. 54DSA (05)	
HIROSE ELECTRIC CO., LTD.		CODE NO.	CL547-0443-6-05	△ 1/1

TO



COUNT	DESCRIPTION OF REVISIONS	BY	CHKD	DATE	COUNT	DESCRIPTION OF REVISIONS	BY	CHKD	DATE
△				..	△				..
△				..	△				..
△				..	△				..

1	PBT	UL94V-0(BLACK)	2	PHOSPHOR BRONZE	CONTACT AREA: GOLD PLATED: $0.2 \mu\text{m min}$ LEAD AREA: TIN PLATED $1 \mu\text{m min}$ UNDER PLATED: NICKEL $1 \mu\text{m min}$
NO.	MATERIAL	FINISH, REMARKS	NO.	MATERIAL	FINISH, REMARKS
CODE NO. (OLD)			DRAWN	DESIGNED	CHECKED
			<i>Y. Michida</i>	<i>Y. Michida</i>	<i>T. Miyagaki</i>
			05.8.10	05.8.10	05.08.10
			APPROVED	RELEASED	
			<i>M. Inokuma</i>	..	
			05.08.10		
DRAWING NO.			PART NO.		
EDC3-160702-05			MDF92-19S-2.54DSA(05)		
SCALE			CODE NO.		
2 : 1			CL547-0443-6-05		
UNITS					
mm					
HRS HIROSE ELECTRIC CO., LTD					
					1/1