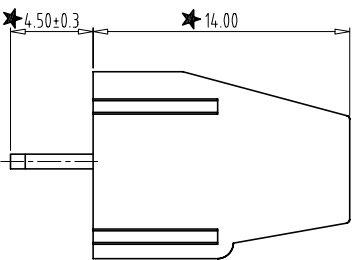
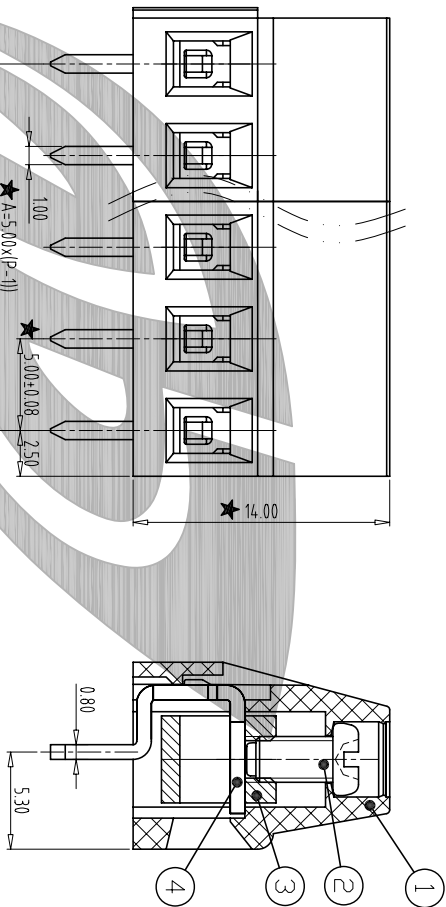
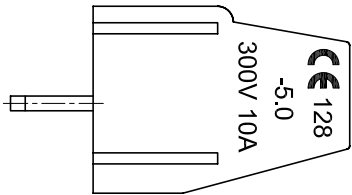
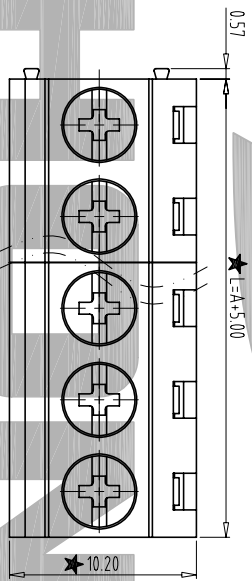


REV	CONTENT	CHK	DATE
V0.0	CONTENT	CXL	14.06.06

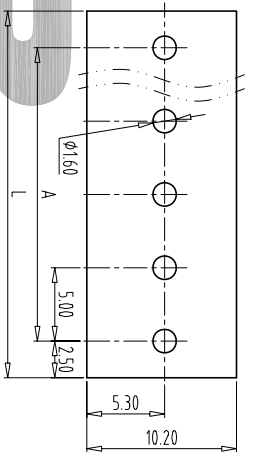


NOTES:

- 1. Rating:300V 10A;
- 2. Insulation Withstands Voltage: AC2000V/MIN
- 3. Insulation Resistance:
≥500MΩ or more at DC500V
- 4. Using Temperature Range: -40°C/+105°C
- 5. Screw Torque Value:0.4N·m
- 6. Suitable Electric Wire: 12-22AWG



PCB LAYOUT
S=2:1



A	Total Pitch Tolerances						Nominal dimension range						T	≡	//									
	in mm						in mm																	
0	30	53	70	90	115	150	200	250	0	30	53	70	90	115	150	200	250	0	0.2	0.3	0.3	0.2	0.3	0.5
to	to	to	to	to	to	to	to	to	to	to	to	to	to	to	to	to	to	to	to	all	to	to	to	to
30	53	70	90	115	150	200	250	320	30	53	70	90	115	150	200	250	320	10	0.2	0.3	0.3	0.2	0.3	

ITEM	NAME OF PART	NO. OF PART	Q'TY	MATERIAL	NOTE
4	SOLDER PIN	ZB128B0001	P	BRASS	Tin Plated
3	BLOCK	ZBXC0001	P	BRASS	Ni Plated
2	SCREW	ZBST0022	P	STEEL	M2.5/Zn Plated
1	HOUSING	ZB128A0XX02 ZB128A0XX03	/	PA66(V0)	

DWG.	HUIAO	DATE	13.09.26	UNITS	mm	SHEET/OF	A4	1 / 1
CHK		DATE		SCALE	2.5:1			
App.		DATE		NAME	ZB128V-XXP-XC(128-铜)			

NINGBO ZHONGBO PHOTOVOLTAIC TECHNOLOGY CO., LTD DWGNO. ZB-02-ZB128VXXPXC